

# Cue Bids by the Responder



**Tom Snow**  
**(805) 305-5035**  
**[coinerbop@gmail.com](mailto:coinerbop@gmail.com)**

# Time for a Joke

**I COULDN'T BELIEVE IT  
TODAY, WHEN I CAME HOME  
AND WAS TOLD BY MY WIFE  
THAT MY 5-YEAR-OLD SON  
WASN'T ACTUALLY MINE...**

**SHE SAYS THAT I NEED TO  
PAY MORE ATTENTION  
WHEN PICKING HIM UP  
FROM SCHOOL.**

# Elegant Defense

15-17 HCPs.

<u>North</u>	<u>East</u>	<u>South</u>	<u>West</u>
Pass	Pass	Pass	1NT

Dealer: West

Vul: E/W

West  
 ♠ 10972  
 ♥ AKJ  
 ♦ K9  
 ♣ AQ96

North  
 ♠ K63  
 ♥ 65  
 ♦ AQJ1032  
 ♣ 73

South  
 ♠ ~~AJ5~~  
 ♥ 10973  
 ♦ ~~7~~  
 ♣ J854

Has partner fallen asleep in his chair again? What do I do now?

## Common Defense Mechanisms



East  
 ♠ ~~Q84~~  
 ♥ Q842  
 ♦ 8654  
 ♣ K102

North passed over 1NT because the opponents were vulnerable. He found a very clever way to force his partner to break a new suit, and there wasn't much promise for South in ♥'s or ♣'s.

N/S went +200, instead of -150 on a ♦ lead or by cashing the first 3 ♠ tricks.



A change of suit by Responder is always forcing except when:

# When Is a New Suit by Responder Forcing?

## 1) Responder is a passed hand and Opener has no extra values:

	North	East	South	West
	Pass	Pass	1D	Pass
	1S	Pass	???	
South	♠Q982 ♥J73 ♦AJ93 ♣A5			

Pass

Notice South opens because he has 16 Pearson Points (15+).

But Opener should have at least 3 of partner's suit to pass.

## 2) An opponent overcalls or opens 1NT (15-17 HCPs) or 2C (strong):

	North	East	South	West
	1S	1NT	2D	Pass
	Pass	???		
North	♠AQ982 ♥QJ3 ♦J3 ♣A85			

Pass

South	♠7 ♥K3 ♦K109842 ♣7642
-------	-----------------------

Partner will have something like this.

If partner has 10+ HCP, he starts with a dbl.

## 3) After an opponent makes a Takeout Double:

	North	East	South	West
	1H	Dbl	2C	Pass
	Pass	???		
North	♠82 ♥KQJ82 ♦AQJ3 ♣85			

Pass

South	♠QJ7 ♥3 ♦742 ♣QJ7642
-------	----------------------

Partner will have something like this.

With 10+ HCP, partner starts with a redbl.

# Contract Priorities – The 3 Finger Rule

This rule applies for partscores, games or slams.

PRIORITIES

- 1.
- 2.
- 3.



- 1) Find an 8-card major suit fit (♥ or ♠).
- 2) Play in no trump.
- 3) Play in an 8-card minor suit fit (♣ or ♦).

**But why are major suit fits preferred over NT? They pay 10 points more for a NT contract, don't they?**

**Because statistically, it is easier to make major suit contracts (and overtricks).**

**HCP Needed For Game:**

- 3NT = 26 HCP  
4♥ or 4♠ = 26 HCP  
5♣ or 5♦ = 29 HCP

So 1S-2C-3S\* and 1S-Dbl-4S\* are WEAK responses (2-6 HCPs) with lots of spades.

# Cue Bids By Responder



WHEN PARTNER OPENS A MAJOR AND YOUR RHO BIDS A SUIT:

Cue bidding RHO's suit shows 3+ card support and 11+ HCPs.

WHEN PARTNER OPENS A MINOR AND YOUR RHO BIDS A SUIT:

Cue bidding RHO's suit shows 11+ HCPs and asks for a stopper in RHO's suit.

10+ with spade support

a)

	North	East	South	West
		1S	2C	???
				3C
West	♠QJ7	♥AJ5	♦QJ93	♣875

Negative Dbl.

b)

	North	East	South	West
		1C	1H	???
				Dbl*
West	♠Q762	♥Q95	♦AJ3	♣Q95

12+ with heart support

c)

	North	East	South	West
		1H	2S*	???
				3S
West	♠107	♥A53	♦Q943	♣AK85

d)

	North	East	South	West
		1C	1D	???
				1H
West	♠K107	♥AKJ4	♦A432	♣85

Negative Dbl.

e)

	North	East	South	West
		1C	1D	???
				Dbl*
West	♠QJ107	♥K865	♦K43	♣85

Doesn't promise club support.

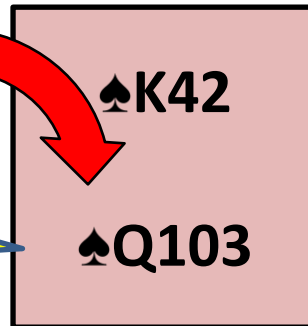
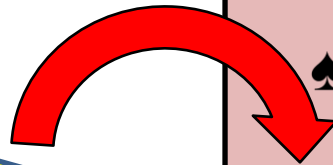
f)

	North	East	South	West
		1C	1D	???
				2D
West	♠Q93	♥Q95	♦A432	♣K53

# Playing from the Right Side



With the lead comes into the Q103 hand (as declarer), the spade suit is double protected no matter which opponent has the ♠J or the ♠A.



1)

North	East	South	West
Pass	1C	Pass	1D
Pass	1H	Pass	???

3NT

West ♠Q102 ♥K53 ♦AK973 ♣J5

2)

North	East	South	West
Pass	1C	Pass	1D
Pass	1S	Pass	???

2H\*

West ♠K42 ♥K53 ♦AQ973 ♣J5

\*This is 4<sup>th</sup> Suit Forcing (forcing to game) and doesn't promise 4 hearts.

# Another Joke

The urge to sing "The Lion Sleeps Tonight" is always just a whim away.

A whim away, A whim away, A whim away.





# Playing from the Right Side





PLAY FROM WHICH SIDE?							
Your Holding	Partner's Holding						
	A102	K32	K102	Q102	Q2	J53	J2
AK10		Yours			Yours	Yours	Yours
AQ10		Yours			Yours	Yours	Yours
AJ10		Yours			Yours	Yours	Yours
A102		Yours			Yours	Yours	Yours
A10 or A9		Yours		Either	Yours	Yours	Yours
KQ10		Yours			Yours	Yours	Yours
KQ2	Partner's	Yours			Yours	Yours	Yours
KJ102		Yours			Yours	Yours	Yours
KJ32	Partner's	Yours		Either	Yours	Yours	Yours
K102					Yours	Yours	Yours
K32	Partner's			Partner's	Partner's	Either	Partner's
K10 or K9	Yours			Yours	Yours	Yours	Yours
K2	Partner's			Partner's	Either	Yours	Yours
QJ3	Partner's	Either	Either				
QJ10 or QJ9	Either	Either	Either				
Q102 or Q92	Either	Yours	Either			Either	Either
Q32	Either	Either	Partner's			Either	Either
Q2	Yours	Yours	Partner's			Either	Either
J102		Either			Either		
J32	Partner's	Either	Partner's	Either	Either		
J2	Partner's	Yours	Partner's	Either	Either		


Rule 1: Once you identify the weak suit, the hand with a 10 supported by an A, K or Q declares.  
 Rule 2: If Rule #1 does not apply and both hands have honors (A, K, Q, J), the shorter side declares.  
 If Rule #1 does not apply and one side has no honors, his partner declares.


♠ K42  
  
 ♠ A103

♠ Q42  
  
 ♠ A103

♠ A42  
  
 ♠ K103

♠ Q42  
  
 ♠ K103

♠ A42  
  
 ♠ Q103

♠ K42  
  
 ♠ Q103

# Using a Cue Bid to Find a Fit



Take-out Double.

South jumps to game with extra HCPs.

<u>North</u>	<u>East</u>	<u>South</u>	<u>West</u>
	1C	Dbl	Pass
2C*	3C	4S	Pass
Pass	Pass		

Partner, pick one of the suits, preferably a major.

North  
 ♠ Q1086  
 ♥ KQ65  
 ♦ J6  
 ♣ K73

West  
 ♠ 9853  
 ♥ 10872  
 ♦ 842  
 ♣ 64

East  
 ♠ 4  
 ♥ A9  
 ♦ K975  
 ♣ AJ10985

South  
 ♠ AKJ2  
 ♥ J43  
 ♦ AQ103  
 ♣ Q2

**N/S makes 3S.**

**E/W makes 1C.**

A cue bid after partner has opened a minor denies 4 hearts (would've used a Neg. Dbl.) and shows 11+ HCPs and is looking for a NT contract.

# Hand #1



<u>North</u>	<u>East</u>	<u>South</u>	<u>West</u>
1C	1S	2S	Pass
2NT	Pass	Pass	Pass

North shows a spade stopper but no extras.

With a minimum (invitational) hand, South passes in a partscore.

North  
 ♠ K86  
 ♥ QJ4  
 ♦ Q84  
 ♣ AJ52

West  
 ♠ 53  
 ♥ 10976  
 ♦ 1076  
 ♣ K1098

East  
 ♠ AJ1072  
 ♥ A82  
 ♦ A52  
 ♣ 73

South  
 ♠ Q94  
 ♥ K53  
 ♦ KJ93  
 ♣ Q64

**N/S makes 2NT.**

**E/W makes nothing.**

# Hand #2

When partner opens a minor, a cue bid does NOT promise support.

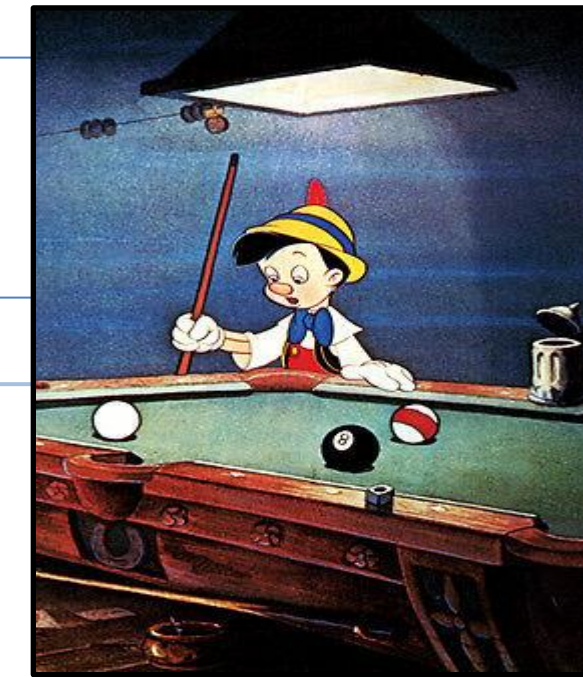
<u>North</u>	<u>East</u>	<u>South</u>	<u>West</u>
1D	1S	2S*	Pass
2NT	Pass	3NT	Pass
Pass	Pass		

North  
 ♠ A5  
 ♥ K104  
 ♦ AJ1084  
 ♣ J86

East  
 ♠ KJ982  
 ♥ QJ2  
 ♦ 52  
 ♣ A43

West  
 ♠ 1063  
 ♥ 9876  
 ♦ 976  
 ♣ Q105

South  
 ♠ Q74  
 ♥ A53  
 ♦ KQ3  
 ♣ K972



**N/S makes 4NT.**  
**E/W makes nothing.**

I have a spade stopper and no extras.

I have enough for game and help in spades.

A cue bid after partner has opened a major promises at least 3-card support and 11+ HCPs.

# Hand #3



<u>North</u>	<u>East</u>	<u>South</u>	<u>West</u>
1S	2C	3C*	Pass
3S	Pass	Pass	Pass

North  
 ♠ AQ976  
 ♥ K93  
 ♦ Q4  
 ♣ Q42

East  
 ♠ 82  
 ♥ A82  
 ♦ A52  
 ♣ AJ1073

North shows no extras by just rebidding his suit.

West  
 ♠ 1053  
 ♥ QJ76  
 ♦ 10876  
 ♣ 86

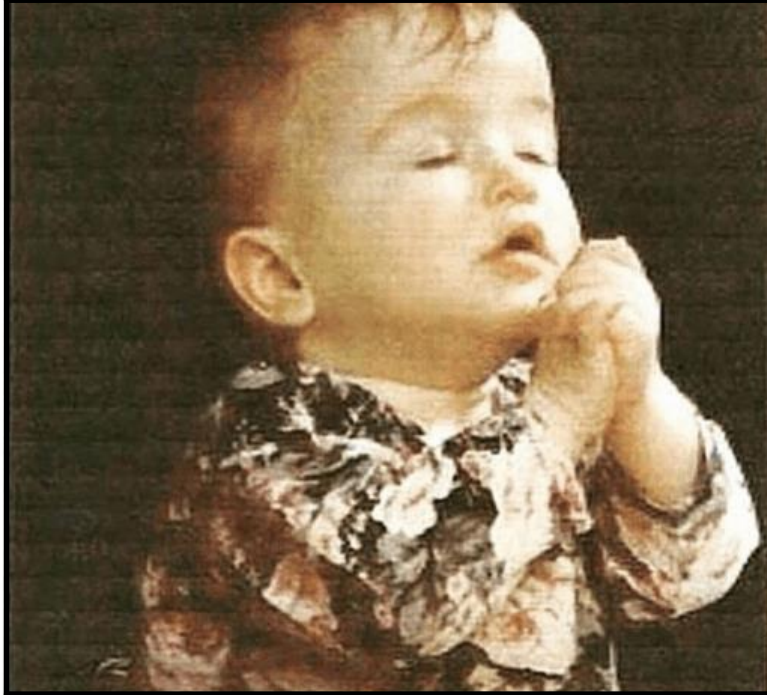
With a minimum (invitational) hand, South passes in a partscore.

South  
 ♠ KJ4  
 ♥ 1054  
 ♦ KJ93  
 ♣ K95

**N/S makes 3S.**

**E/W makes 1C.**

**PLEASE GOD!**



**DON'T LET ME MAKE MANY  
MISTAKES.**

**Time for the Game**