



Greetings to you all

Well, it's been quite a while since we did our last newsletter but rest assured, your committee have been busy on your behalf. Our AGM passed off quite well and our new Chair, Anne Gurd was elected. Anne Gurd is a relatively new bridge player but a wise and experienced team player so she is most welcome. There's plenty going on in Anne's life at the moment....not just bridge and holidays and so she is taking a 2 month rest period to support her family. However. We run on, like a well oiled machine and hopefully listen to you as we trav-

el along.

We have also attracted a group of new learners and whilst not formally club members, they have started joining in on a Thursday, initially and as observers and subsequently as new members. We are delighted that Neil and Sadhana have felt able to put their toe in the water and hopefully others will follow.

We have been putting ourselves about a bit as an EBU unaffiliated club and attended the Leicester County Bridge Association AGM where we were



made to feel most welcome and made some useful contacts for our teaching.

We also gave a presentation on bridge and our experiences of grant application to the Hinckley and Bosworth rural communities forum and laid the foundation for future funding applications for us in terms of growth

OnLine Bridge and Techy

Well , it's still here! We have our regular on line play on Mondays through BBVA using RealBridge and thanks Simon for his hard work and support in this in our partnership with Market Bosworth-

We have been delighted with the transfer of our scoring tablets to BridgePal from Bridgetabs. Again we have to thank Simon for this who both did the research and set up our tablets for us. Face to face sessions are

much more stress free for our Directors



Don't get bored set up a tablet! Thank you Simon

Inside this issue:

Our Finances	2
Membership	2
Competitions and challenge	2
Partygate	3
Volunteers	3
Publicty	3
	4

Our Finances

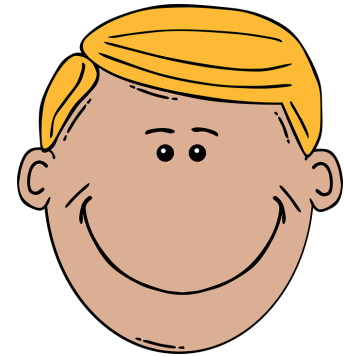


We are doing very well as both our learners and our face to face sessions are covering our costs. The raffle is an added bonus as well as being a bit of fun. Our online play using RealBridge through BBVA is also an added bonus. Our current bank account is showing £1900+

which makes a happy treasurer!

This enables us to keep pace with the purchase of new equipment in line with the growing number of players. To this end we shall be purchasing 2 new sets of 32 boards to give us more options for movements with 8 or more tables. We shall also need an additional carry bag as Roger kindly does the dealing at home and brings the boards in each month. This is a system which works really well. We shall be bringing in two additional tables as and when our storage is a bit more organized.

Our system of invoicing you for play each month seems to be



working well and people seem to like it. We are also managing the cash and cheque arrangements as and where necessary. Currently we are incurring bank charges of around £5.00 pcm and so your co-operation in these arrangements is much appreciated

Members

It was with great sadness that we learned of the sudden death of John Dagley and we offer our sincere condolences to Janet and her family. (See back page).

We have lost a few members since we returned to face to face bridge and gathered a few more en route. We are pleased to welcome Neil and Sadhana who have joined us from the Learners group and we



hope there will be more to follow..

And, of course, the cakes are coming home. Welcome back Gosia and John when you return to us in March. We are eagerly awaiting!!

We have had plenty of birthdays but none with a zero to celebrate. We are all getting a little bit older, we can't stop that but hopefully bridge keeps us young and alert and even able to enjoy a few bridge holidays.

Competitions and challenge!

We are well on our way with the Knockout competition and thank all members for 100% participation, their warmth and generosity to their opponents. All seem to be having a good time with the first round completed and all running on schedule. Thanks to Steve for organizing so well

. We are planning an interclub so-

Social event in the spring with multi teams of four and a mini afternoon tea so stand by for details and requests for help!!!

The 70% club continues to grow with George and Andy added to it following their score of 73%. Similarly Betty and Belinda joined the 70% club in November. Continued back page!!



Party Gate Time

Yes! You can get out those Christmas jumpers if you wish for our annual fun bridge event. This will be on **Thursday December 15th 12.30pm** and you'll never guess who's birthday that is! We shall start with lunch and wonder if you would be kind enough to bring a plate of food....not too much and not too many sausage rolls and mince pies! We usually do manage to get a variety although this will be our first Christmas soiree since Covid times! The club will provide some wine and non alcoholic drinks together with some spot prizes and prizes for the winners. You will be playing with your partner for the afternoon and incur a few penalties



as you travel around the room but no singing or charades!

After this we shall have two weeks rest from face to face bridge on the 22nd and 29th. However, if there is sufficient interest, we shall offer some **online bridge via BBO on Thursday 22nd and 29th 1.00** with 18 boards. Hopefully we might be joined by those who used to play

Before they returned to face to face bridge. We shall therefore re-open for Face to Face bridge on **Thursday January 5th** and you'll never guess who's birthday that is!



Volunteers : Big Thankyou! You make us very proud!

Just to say thank you to you all for your efforts to support us in our work to develop the club. Most groups find it difficult to find helpers. However, this isn't our experience. We have been pleased to welcome Mary Danaher onto the committee who is taking a lead in sort-



ing our re-

freshments. She is not having much luck in weaning us off those chocolate biscuits and marshmallows but is trying hard!

Andy Brown who is already a trained director has volunteered to help us in running our duplicate sessions and Simon has offered to cover in the directors' absence. Steve is helping us with the competitions.

Publicity

We regularly submit articles to local village magazines and do press releases to local newspapers when we are about to start a new beginners course. We attend four different bridge clubs and generally put the word out about our club. As a result we are getting increasingly well known and gaining a good reputation. This is not just due to the

work of the committee but to you all in taking round leaflets and giving the club a warm and welcoming, as well as, professional atmosphere. Anne thought of preparing business cards and we could get these done more professionally, do some promotional leaflets and some publicity banners for

local events. Grants are available. We could also acquire a gazebo for local events with promotional material and a table for four enthusiastic bridge players to shelter from the sun and rain demonstrating the merits of bridge play. If you are interested in joining in the fun let us know!



E

Email. whistlestopbridge
inbagworth@gmail.com
Emergency phone : 07530364339

Never Knowingly Underplayed!

Our Mission is to share and spread the game of bridge to local people for their enjoyment, health and well being in a friendly, safe and comfortable environment



We are on the web

www.bridgewebs.com/bagworthwhistlestopbridge

Extensions



John Dagley who passed away August 3rd 2022

Competitions

And who are these two likely lads?



Yes it's John Baker and Dave Wenham who were paired up in our first competition the 'random pairs' receiving their trophy from Anne at the AGM