



Our Annual General Meeting : Thank You!

Not the snappiest title you might think! However, this was important because it reviewed our first year and set in motion the plans for 2019-20.

We had 27 people attending which enabled us to have a 7 table bridge drive and some great food. A big thank you for your help, making sandwiches, cakes and meringues. We didn't hold back!!

Minutes will be available but as a reminder you made some important decisions. These included the establishment of the Committee with Carol as the Chairman, John as the treasurer and Shelagh as secretary and communications. You also agreed not to pursue adoption by another club at this stage, nor to join the English Bridge Union. Obviously these decisions

can be reviewed at a subsequent stage if members wish.

You also set us a work agenda in terms of the electronic equipment required for scoring. This has occupied much of our time but it has been interesting doing the research but more

of this later.

In order to help us on our way with this, Toni Capewell gave us a very generous present towards this



Bridge Tuition : tell your friends

We are starting again!!

Yes Carol and Shelagh will start a new beginners course so do tell your friends. We need a minimum of 8 to make the course viable in terms of teaching so that we have two tables but we can take up to 16.

We shall be starting with a crash course again on Saturday and Sunday **November 9th and 10th 10.00-4.00** followed by **4 Tuesday evenings. The cost for the weekend is £20.00 payable in advance!**

Don't forget...tell your friends

More inside

Inside this issue:

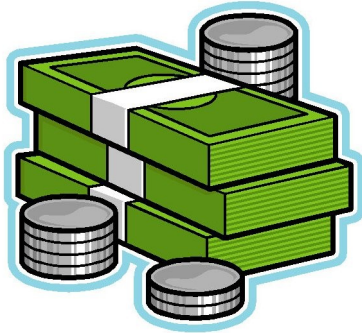
Our Finances	2
Membership	2
Competitions	2
Claire	3
Tablets/ bridgemates	3
Holidays	3
Web site	4



Our Finances

Well done John, our new treasurer and his able assistant Marilyn. They have managed to open a bank account for the group.

This was NOT an easy process, in fact it was decidedly difficult involving visits to banks in Market Bosworth and Hinckley, rows with various banks, and a confusion by the



banks of the processes required. The whole process took about 6 weeks but we are modern and can pay for and order goods on line. You can set up a standing order for your annual subscription..

Fortunately we did have some money to put in the bank which always helps!

John will happily give you an update on our current balance as he keeps a record on a monthly basis when we receive a statement.

All is good in our group's financial state and we now have over £1600 in the bank. This is sufficient for us to get our scoring hard-

ware. This is no small part due to you all in coming regularly, keeping the subscriptions at £10.00 and contributing to our raffle. Well done all you lucky prize winners of good quality wine or chocolates. We can do cash if you are sugar and alcohol free but I don't think you are especially when we look at the biscuit consumption each week!!



Membership

We now have 38 members with most of you playing regularly! Welcome to David Simmons who is our newest member. Enjoy!

Thank you for suggesting and agreeing to keeping our annual subscription at £10.00 and for paying so promptly.

Some could be a little tardy as the numbers of payers does not quite

match the number of members!!

If you are like our little friend on the right or are not sure if you have paid, just ask and or PAY UP!!

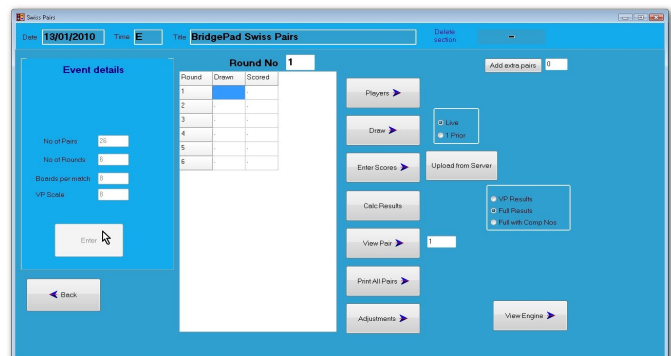


Competitions

We are a bit too small as a club yet to start any competitions but if you have any ideas on bridge competitions, that is, do let us know ideas are welcome.

One of the ideas suggested at the AGM was to keep in touch and be sociable with neighbouring clubs which we have done.. On the whole we were warmly welcomed and we would like to consider having a friendly swiss pairs near Christmas. This is just like duplicate but you play several

boards with the same pair and move on to play pairs with a similar standard to your own. If any of you can help organise it would be appreciated



Claire Lewis

It was with such sadness that we learned of the recent death of Claire Lewis on September 27th.

Claire was one of our original members and played often with Les in Bagworth and also played in Ashby where she had been a member for many years.

Claire was special as a person and a good bridge player. She was as tolerant, gentle and polite in life as at the bridge table. She will be missed by us all. We have expressed our condolences to Claire's family



To tablet or not to tablet ???

....that is the question. We could have bridge mates which many of you know...or we could go for scoring on 7" tablets.



Thank you for coming to try out the tablets and for giving us your feed-

back.

We are awaiting a further quotation from a company which uses Lenovo tablets rather than the Kindle fire. The bridge-mate has the advantage of being more robust and is battery operated so does not require charging but is not as easily accessible as the tablets. The tablets have the disadvantage of requiring an annual license fee but are generally easier and more visible. The charging element is not a major concern and costs and support



Your Holidays

Well these bridge holiday companies are doing well out of us!

Since our last newsletter, Marilyn and John; Carol and Averil have done Mr Bridge weekends at Grantham and at Swindon. It was in Swindon where Marilyn and John had their big success coming first no less than three times in the weekend. It wasn't quite as successful this weekend in Grantham for them and where Nora Played as well

Carol, Averil, Belinda and Shelagh had a sunny and fairly gin soaked 5 days in Bournemouth hob knobbing with the rich and famousfootballers and chefs! (The rich and fus were not playing bridge!)

Mary and Ann made it to a Norwegian cruise...not the one where in the news where the ship couldn't dock and Shelagh and Carol worked hard to get some bridge points on their Italian Lakes holi-

day. Belinda is doing bridge and bowls in Spain at the moment!!

Next up Turkey beckons for Ann, Mary, Shelagh and Carol. If you are thinking of a bridge holiday do ask...someone else has probably been!!





Bagworth Whistlestop Bridge

E

Email. whistlestopbridge
inbagworth@gmail.com
Emergency phone : 07430364339

Never Knowingly Underplayed!

Our Mission is to share and spread the game of bridge to local people for their enjoyment, health and well being in a friendly, safe and comfortable environment



We are on the web

www.bagworthwhistlestopbridge@btck.co.uk

Web site change

At the moment our web site comes free from BT to support community and voluntary organisations. It is rather limited but does promote the club and give essential information.

When we get our new scoring system it would be sad not to have the results professionally displayed each week and have the chance of viewing and learning from the hands played on the web site. You can relive all those painful moments again and hopefully learn from them.

For this to happen we need a specialist bridge web site and we have researched two which seem to be the ones used by most clubs. These are Pianola and Bridgewebs. They basically do the same things but bridgewebs is a bit cheaper and we have some experience of using this, so we shall go with Bridgewebs

This charged with an annual subscription but is not that expensive... £60 p.a.

We then need to have the cards dealt to be read on the web site which requires a dealing machine. These are very expensive...but are good...perhaps something to be considered by you at the next AGM. In the meantime, we are trying to negotiate with adjacent clubs to get our boards dealt. There is also another cheaper machine which is affordable which we are considering. Another option might be to share the purchase with another club.

Don't forget road works approaching Bagworth at various times during the winter

Try googling :

bridgewebs.com

Bridge Tabs

Arc Scorer

Bridgemates

Pi-

